

# LSR2001BC

Laser technology

**comark**

*Bike, e-scooter & pedestrian counter*

The LSR2001BC detector uses the laser technology to detect bicycles, e-scooters and pedestrians. The emitted laser beam is used to scan on 4 parallel planes at an angle of 96 °. For each plane the sensor detects 274 points and is able to accurately identify the profile of the bicycle, e-scooter or person.

The laser detector is able to:

- Count bicycles, e-scooters, pedestrians
- Discriminate between Bicycles, e-scooter and pedestrians
- Detect the transit direction

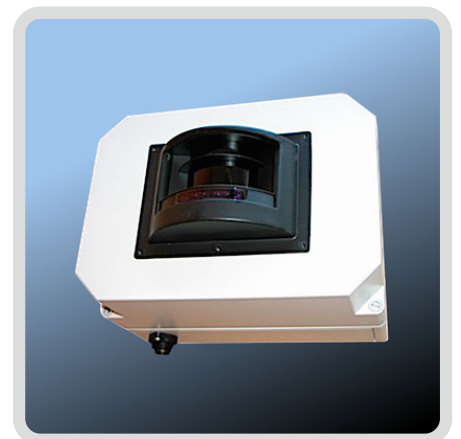
Opposed to other simpler counting systems, the sensor LSR2001BC is very accurate in detecting bicycles, e-scooters and pedestrians; even in case of groups. The sensor performs continuous scans across the width of the cycle path and is able to discriminate individual bicycle even if very close to each other.

Another important feature is the ability to distinguish between pedestrians, e-scooters and cyclists analyzing the profile.

The sensor must be installed on a pole at the side of the cycle path at a height between 2 to 5 meters. The sensor is equipped with an adjustable bracket which allows the precise orientation.

The detector has been designed by both the mechanical and the firmware point of view to work outdoors even with adverse weather conditions. The firmware implements filters for rain and snow.

The sensor is equipped with a CPU that processes the signals received from the scanner to obtain all the data related to transit. The communication with the sensor can be done through Ethernet line. The configuration through the Ethernet line can be carried through the use of simple and intuitive web pages.



Comark srl

**Registered Office:**  
Strada delle Betulle, 89  
33030 Campoformido (UD) Italy  
info@comarkud.it  
P. IVA 02327660300

**Headquarters:**  
Via Galileo Galilei, 5  
33010 Tavagnacco (UD) Italy  
Tel. +39 0432 882105

[www.comarkud.it](http://www.comarkud.it)



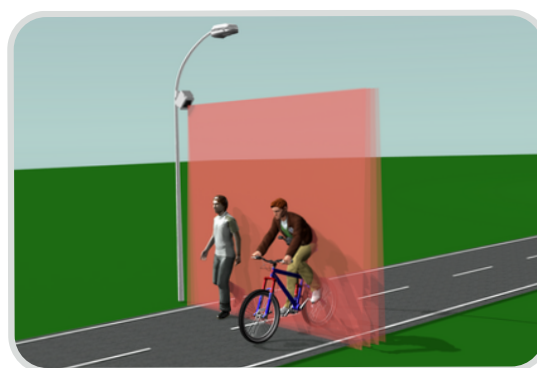
# LSR2001 BC

Laser technology

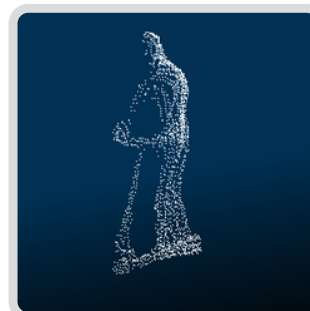
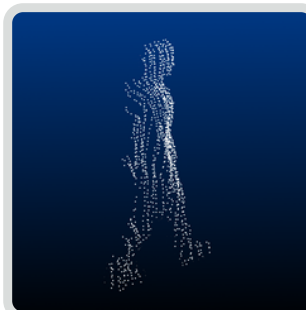
**comark**

*Bike, e-scooter & pedestrian counter*

Technology	Laser scanner
Number of planes	4
Points per plane	274
Emitted Light	905 nm not visible
Laser class	Class 1
Range	30 mt
Scan angle	96°
Scan frequency	16 m sec
Power supply	12 ÷ 28 Vdc
Protection	IP65
Temperature range	LSR2001: -20°C ÷ +50°C LSR2001T: -40°C ÷ +60°C



Counting	✓
Classification bicycle/e-scooter/pedestrian	✓
Multiple lanes detection	✓
Detection of groups	✓
Transit direction	✓
Occupancy time	✓



#### ACCESSORIES

- Mounting Brackets
- Environmental Protections
- Stainless Steel Casing
- Router
- CO1010 Control Unit

Comark srl

**Registered Office:**  
Strada delle Betulle, 89  
33030 Campoformido (UD) Italy  
info@comarkud.it  
P. IVA 02327660300

**Headquarters:**  
Via Galileo Galilei, 5  
33010 Tavagnacco (UD) Italy  
Tel. +39 0432 882105

[www.comarkud.it](http://www.comarkud.it)

