

LSR2001 DOUBLE

Double Laser scanner



Up to 2 lanes detection, speed measurement from side of the road

The LSR2001-DOUBLE sensor uses two laser scanners to detect vehicles. Installed at the side of the road, its unique configuration permits to detect also the vehicle speed and length in 2 lanes.

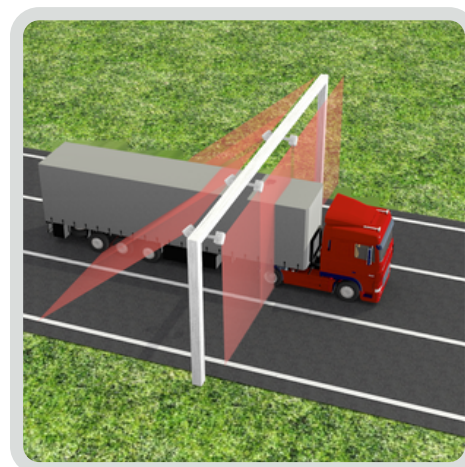
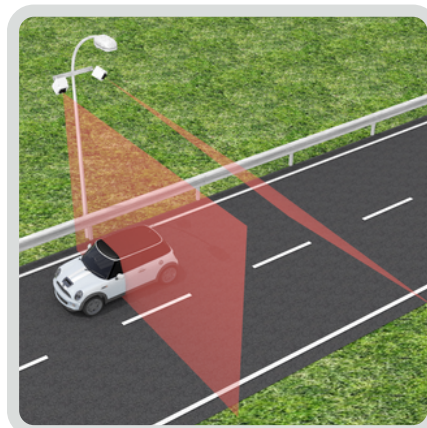
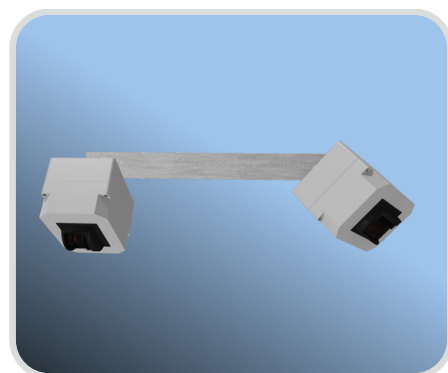
LSR2001-DOUBLE is able to accurately measure vehicle profiles and is therefore the ideal tool for applications where precise vehicle classification is required.

It is able to distinguish more than 20 classes of vehicles including:

- Motorcycles
- Cars
- Vans
- Trucks
- Lorries
- Articulated lorries
- Buses

The LSR2001-DOUBLE is composed by a master and a slave sensor. The master, which contains the CPU, gets the data from the slave and combines it with its own data. The master sensor makes vertical scans and is mainly encharged of counting, classification and triggering. The slave is rotated to detect the vehicle at a certain distance from the master and it may be used, for example, to trigger a camera installed on the same pole. The orientation of the slave detector depends on the installation height of the detector.

Being a laser scanner, the detector can measure the vehicle's profile and their presence. For the said reasons it is very precise on classifying and counting vehicles even in "heavy" traffic conditions, stop & go and in queue presence.



Comark srl

Registered Office:
Strada delle Betulle, 89
33030 Campoformido (UD) Italy
info@comarkud.it
P. IVA 02327660300

Headquarters:
Via Galileo Galilei, 5
33010 Tavagnacco (UD) Italy
Tel. +39 0432 882105

www.comarkud.it



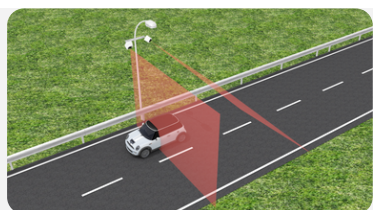
LSR2001 DOUBLE

Double Laser scanner



Up to 2 lanes detection, speed measurement from side of the road

Technology	Double Laser scanner
Emitted Light	905 nm not visible
Laser class	Class 1
Max. detection range	20 m
Scan angle	96°
Scan period	16 ms
Transmission power	16 dB each sensor
Communication line	Ethernet
Power consumption	< 8 W
Power supply	12 ÷ 28 Vdc
Protection	IP65
Temperature range	LSR2001: -20°C ÷ +50°C LSR2001T: -40°C ÷ +60°C



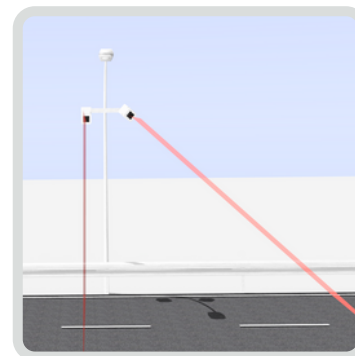
LSR2001 DOUBLE

Counting	✓
Speed	✓
Height	✓
Vehicle class	✓
Length	✓
Gap	✓
Headway	✓
Traffic status	✓
Trigger for cameras	✓



APPLICATIONS

- Toll
- Traffic monitoring (ITS)
- Vehicle profiling
- Maximum height relief
- Vehicle classification
- Trigger for cameras



ACCESSORIES

- Mounting Brackets
- Environmental Protections
- Stainless Steel Casing
- Router
- CO1010 Control Unit

Comark srl

Registered Office:
Strada delle Betulle, 89
33030 Campoformido (UD) Italy
info@comarkud.it
P. IVA 02327660300

Headquarters:
Via Galileo Galilei, 5
33010 Tavagnacco (UD) Italy
Tel. +39 0432 882105

www.comarkud.it

